



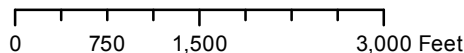
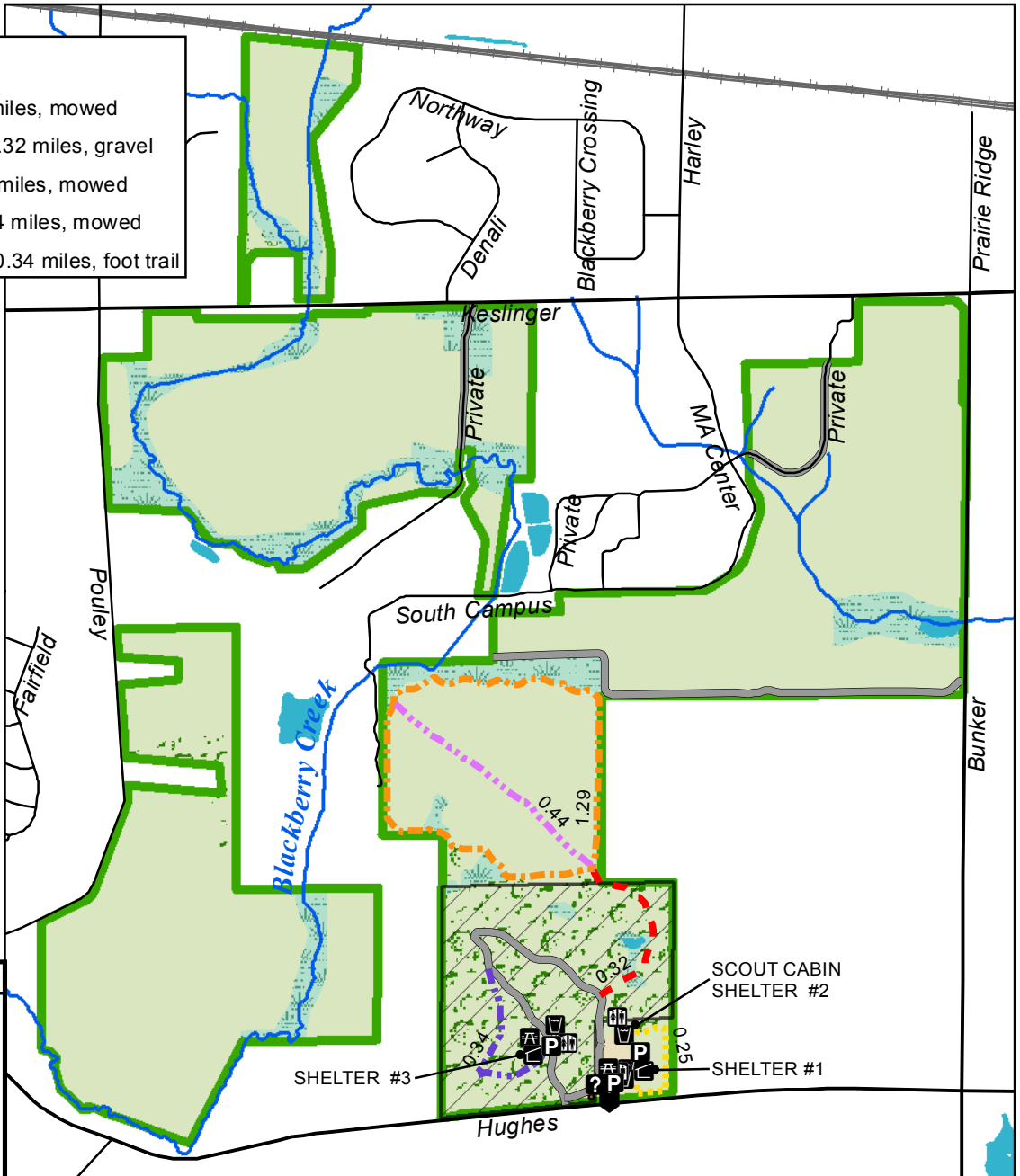
Johnson's Mound Forest Preserve

Trail Information

- East Loop Trail 0.25 miles, mowed
- N-S Connector Trail 0.32 miles, gravel
- North Loop Trail 1.29 miles, mowed
- North Prairie Trail 0.44 miles, mowed
- West Woodland Trail 0.34 miles, foot trail

Legend

- Main Entrance
- Information
- Parking
- Shelter
- Picnic Area
- Restroom
- Water
- Road
- Railroad
- Forest Preserve Road
- Creek
- Open Water
- Illinois Nature Preserve
- Forest Preserve
- Natural Area -
 - Grassland
 - Maintained
 - Wetland
 - Woodland



41W600 Hughes Road,
Elburn, IL 60119
Approx. 2 miles east of
IL Route 47

Acreeage = 743
Total trail miles = 2.74

Information: (630) 232-5980
www.kaneforest.com
Hours: Daily, Sunrise-Sunset

