



2018 Progress Report

**Following the 2017 Land Acquisition
& Preserve Improvement Referendum**

FOREST PRESERVE DISTRICT OF KANE COUNTY

2017 Referendum Recap ...

Part of our success: good timing

- Because of savings due to sound financial management, bond payoffs and refinancings, we had an opportunity to add acreage, make preserve improvements, and still provide a tax decrease to Kane County residents
- Annual cost per household (\$250,000 home) is \$22 per year or \$1.83 per month.
- After 20 years, the investment will be fully paid off

Asked the public for approval to issue \$50,000,000 in general obligation bonds

- Land Acquisition (80%)
- Capital Preserve Improvements (20%)

Land Acquisition Strategy

- Grow existing preserves
- Increase flood control and water protection
- Preserve wildlife habitat and natural areas
- Improve our renowned trail system
- Expand recreation and nature education opportunities
- Leverage dollars to maximize return

By the Numbers ...

Total District Acreage Prior to 2017 Referendum: 20,819 acres
Total Land Acquisition Investments (as of Nov. 1, 2018): \$19,052,929.48
Acres Acquired to Date: 1,464.88
Number of Expanded Preserves 13
Number of New Preserves: 3
Total District Holdings: 22,284 acres

Total Referendum Proceeds & Interest: \$50,158,623.08
Total Planned for Land Acquisition: \$40,156,605.44
Total Planned for Capital Improvements: \$10,002,017.64

LAND INVESTMENT UPDATES

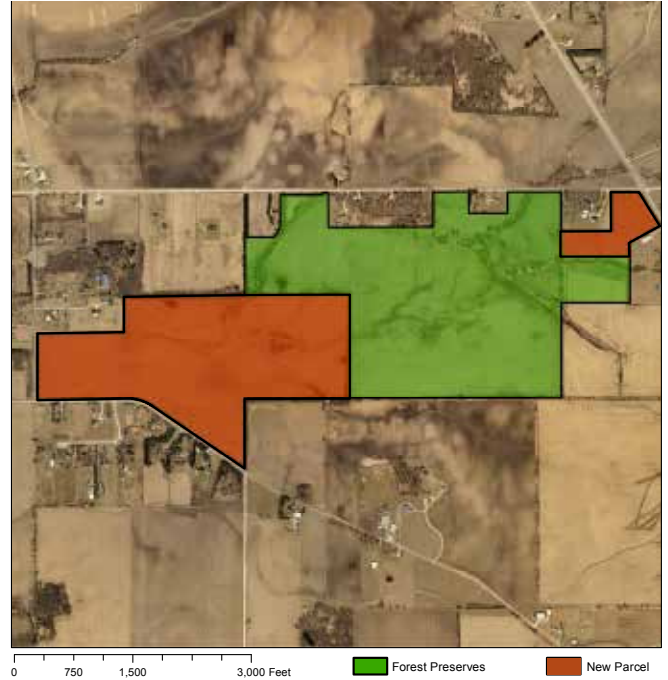
Sauer Family Prairie Kame Forest Preserve

71.48-acre addition, Elburn
\$864,087.66 investment



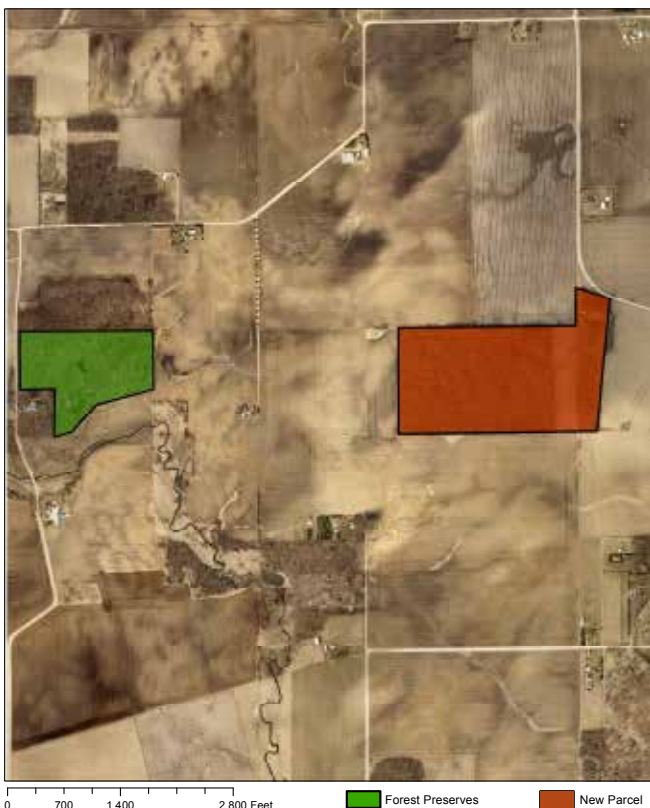
Cardinal Creek Forest Preserve

Combined 133.17 addition, Hampshire
Combined \$1,725,713.50 investment



Yet-To-Be-Named Forest Preserve

Combined 85.24-acre addition, Big Rock
Combined \$1,002,136.16 investment



Binnie Forest Preserve

Combined 84.01-acre addition, West Dundee
Combined \$1,050,329.09 investment



Muirhead Springs Forest Preserve

Combined 325.06-acre addition, Elgin

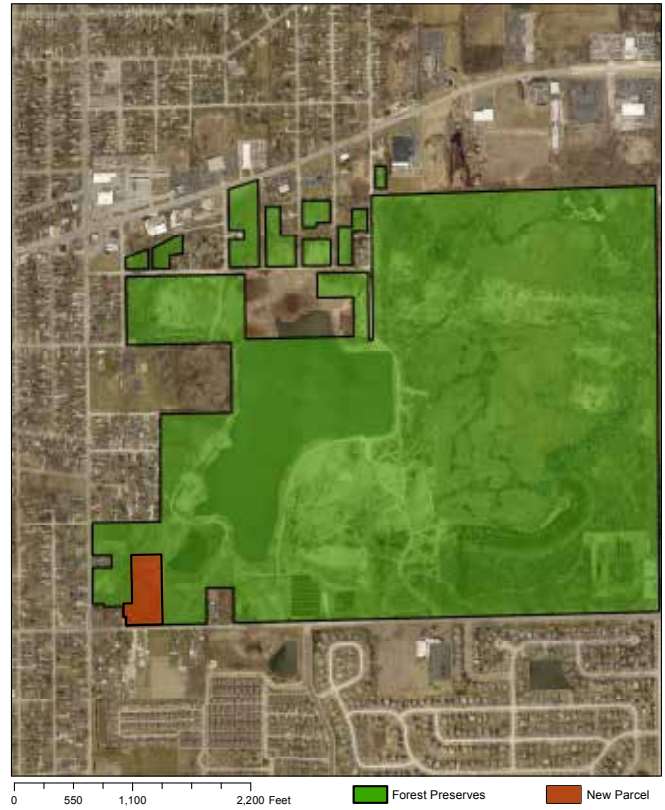
Combined \$3,747,535.91 investment



Oakhurst Forest Preserve

4.69-acre addition, Aurora

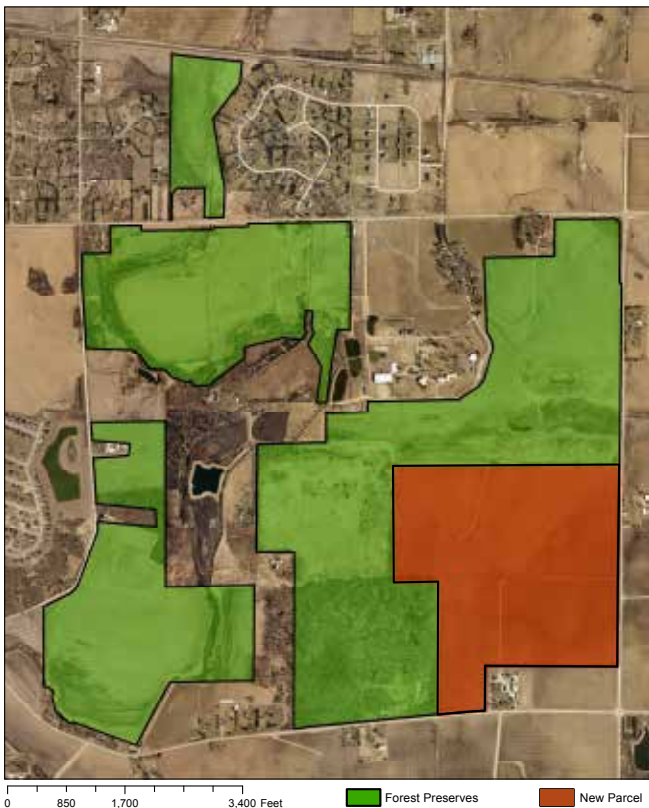
\$317,841.79 investment



Johnson's Mound Forest Preserve

Combined 261.48-acre addition, Elburn

\$5,082,119.78 investment + \$2.1 million donation



Yet-To-Be-Named Forest Preserve

25.74 acres, St. Charles

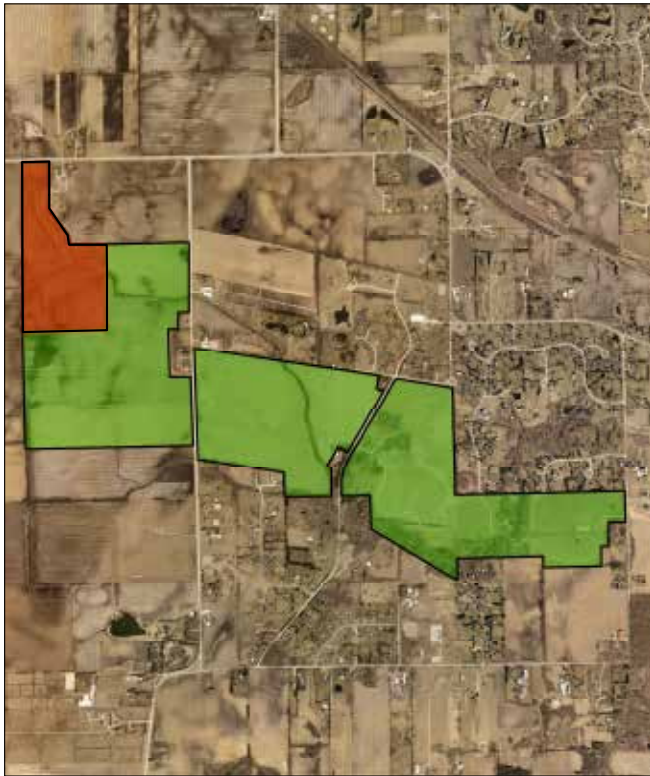
Donation by Donald Edwards valued at \$514,800



Bowes Creek Woods Forest Preserve

114-acre addition, Elgin

\$696,552.97 investment



LeRoy Oakes Forest Preserve

Combined 22.24-acre addition, St. Charles

Combined \$156,362.77 investment



Chicago Premium Outlets Wetland

75-acre addition, Aurora

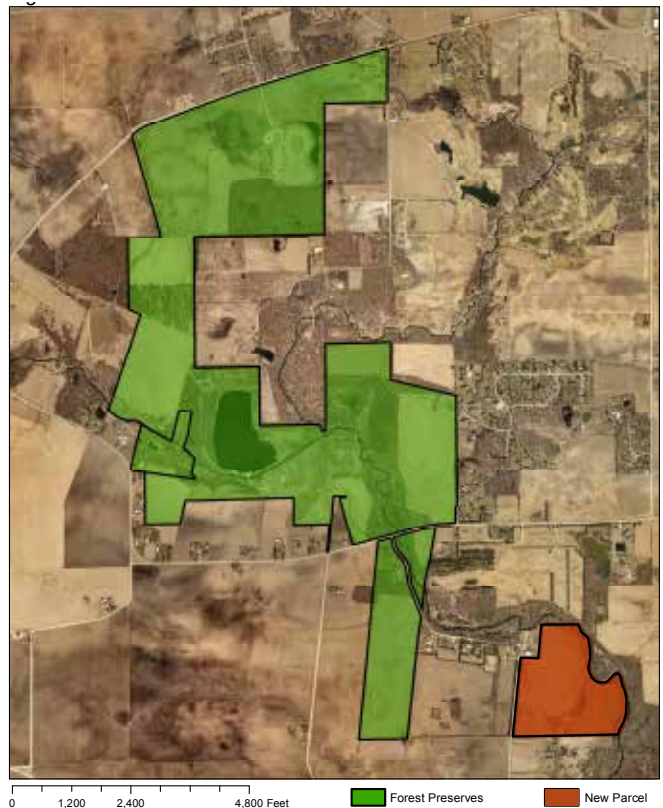
Donation valued at \$375,000



Big Rock Forest Preserve

86.27-acre addition, Big Rock

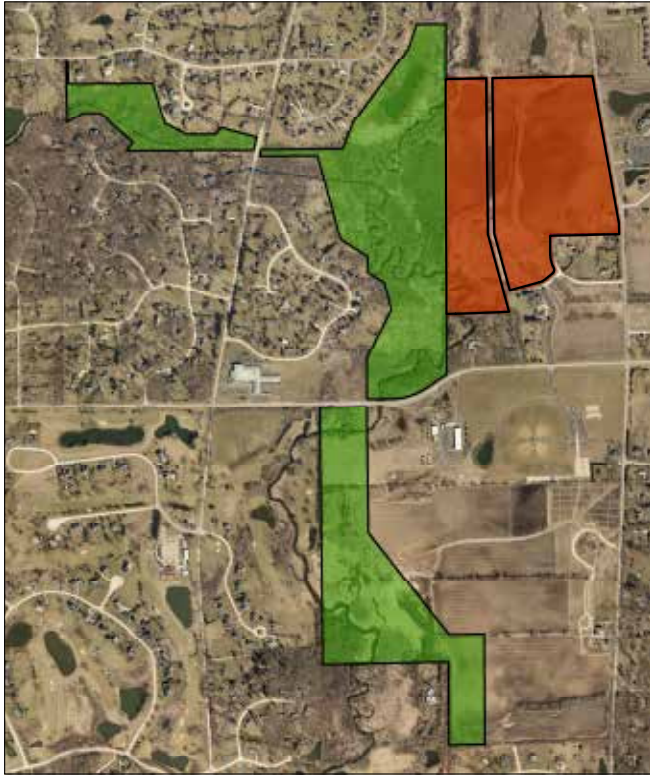
\$1,004,446.82 investment



Ferson Creek Forest Preserve

Combined 77 acres, St. Charles

Combined \$1,021,546.19 investment



Raceway Woods Forest Preserve

7-acre addition, Carpentersville

\$500,857.71 investment



Fox River Shores Forest Preserve

Combined 86.5 acres, Carpentersville

Combined \$1,844,015.13 investment



Glenwood Park Forest Preserve

6-acre addition, Batavia

\$39,384.00 investment



PRESERVE-IMPROVEMENT UPDATES

Preserve Improvement Project Updates

- Trail connectivity
 - All acquisitions help in this regard
- Redesign Oakhurst Forest Preserve (Aurora)
 - Plans for redesign submitted for possible grant
- Installation of new or updated boat/canoe/kayak launches
 - For Oakhurst FP, part of overall redesign, awaiting grant notification
 - Buffalo Park FP is next in line for boat-launch improvements

Natural Area Enhancement Updates

- Helm Woods Forest Preserve (Barrington) flatwoods and migratory bird habitat restoration
 - Project is underway, bid was awarded in the fall.
- Dick Young Forest Preserve (Batavia) habitat revitalization:
 - Conduct a hydrologic study
 - Install a variable water-control structure to maintain hemi-marsh (half water/half vegetation) conditions
 - Employ stronger wetland-weed control
- New wetland habitat at Pingree Grove Forest Preserve (Pingree Grove)
 - Preliminary work is underway. We're working with The Wetlands Initiative (TWI) using their expertise to create bid specifications for both the Dick Young FP and Pingree Grove FP projects. Plans are to let RFQs in Spring 2019.