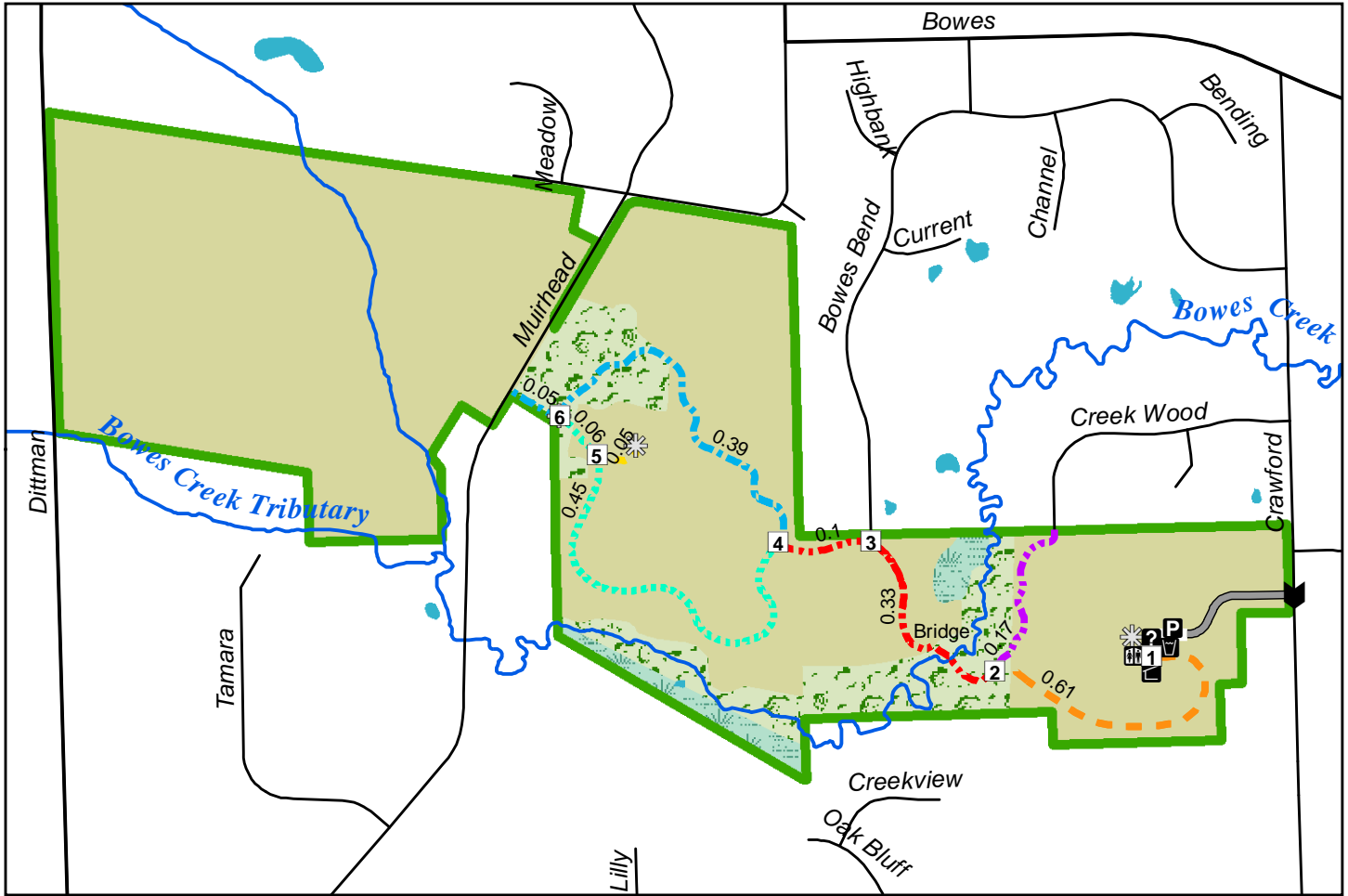


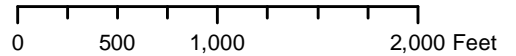


Bowes Creek Woods Forest Preserve



Legend

- Main Entrance
- Information
- Parking
- Shelter
- Restroom
- Water
- Interpretive Sign
- Road
- Forest Preserve Road
- Creek
- Forest Preserve
- Open Water
- Natural Area -
 - Cropland
 - Wetland
 - Woodland



Trail Information

- Trail Intersection
- Dragonfly Trail 0.17 miles, screenings
- Grassland Trail 0.51 miles, screenings
- Meadow Trail 0.65 miles, screenings
- Old Grove Trail 0.44 miles, screenings
- Overlook Trail 0.05 miles, screenings
- Willow Trail 0.44 miles, screenings

9N420 Crawford Road,
Elgin, IL 60124
Approx. 1/2 mile south of
Bowes Road

Acreage = 245
Total trail miles = 2.26

Information: (630) 232-5980
www.kaneforest.com
Hours: Daily, Sunrise-Sunset

