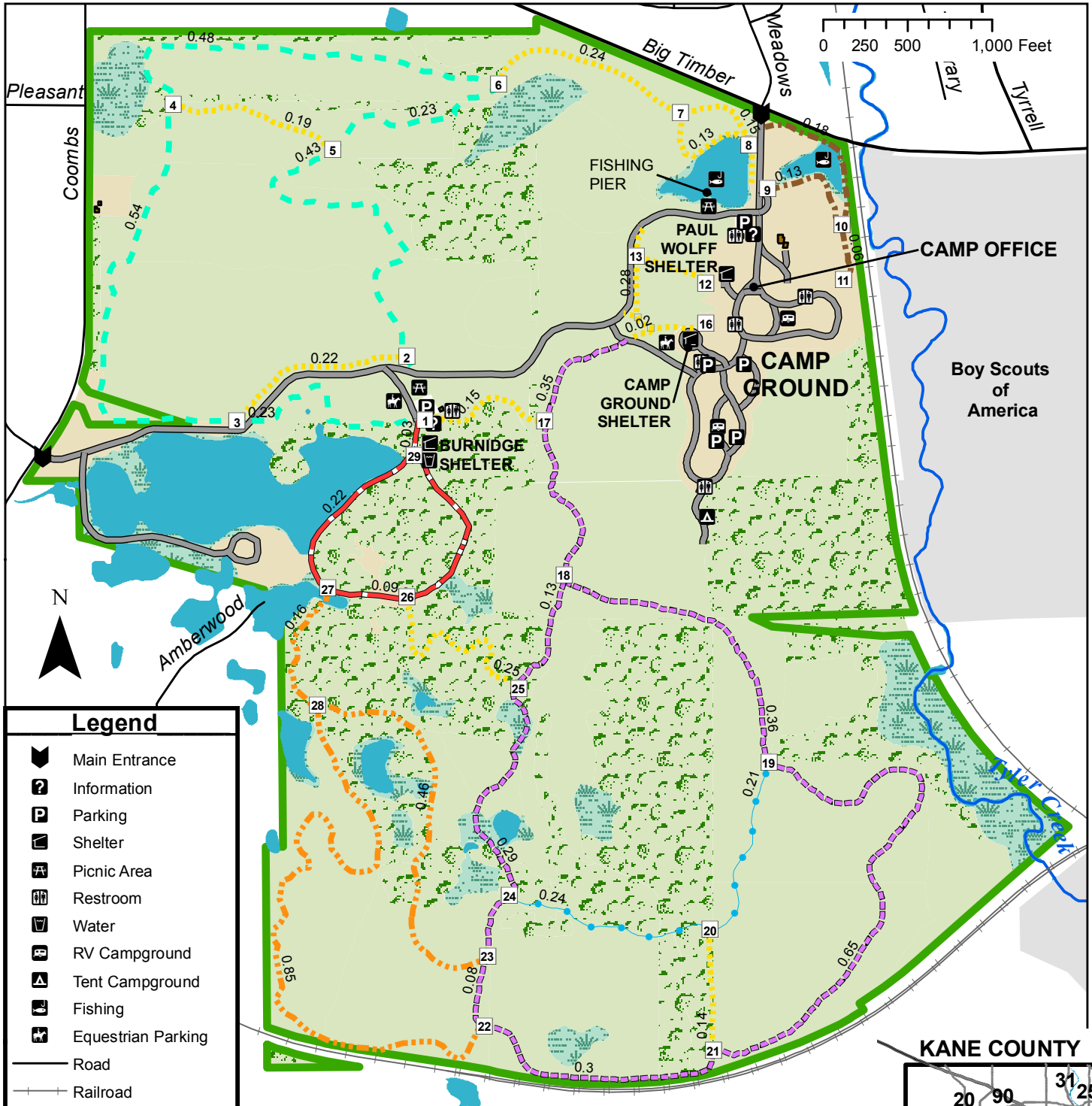




Burnidge Forest Preserve (Paul Wolff Campground)



Legend

- Main Entrance
- Information
- Parking
- Shelter
- Picnic Area
- Restroom
- Water
- RV Campground
- Tent Campground
- Fishing
- Equestrian Parking
- Road
- Railroad
- Forest Preserve Road
- Creek
- Public Open Space
- Open Water
- Forest Preserve
- Natural Area -
 - Grassland
 - Maintained
 - Wetland
 - Woodland

Trail Information

Trail Intersection

- Connector Trail, mowed
- Central Trail Loop 0.56 miles, asphalt
- North Trail Loop 1.91 miles, mowed
- Northeast Lake Loop 0.37 miles, mowed
- South Trail Connector 0.45 miles, mowed
- South Trail Loop 2.24 miles, screenings
- West Trail Loop 1.47 miles, mowed

38W235 Big Timber Rd,
Elgin, IL 60124
Approx. 1.4 mi west of Randall Rd

Acreeage = 590
Total trail miles = 8.77

Information: (630) 232-5980
www.kaneforest.com
Hours: Daily, Sunrise-Sunset

